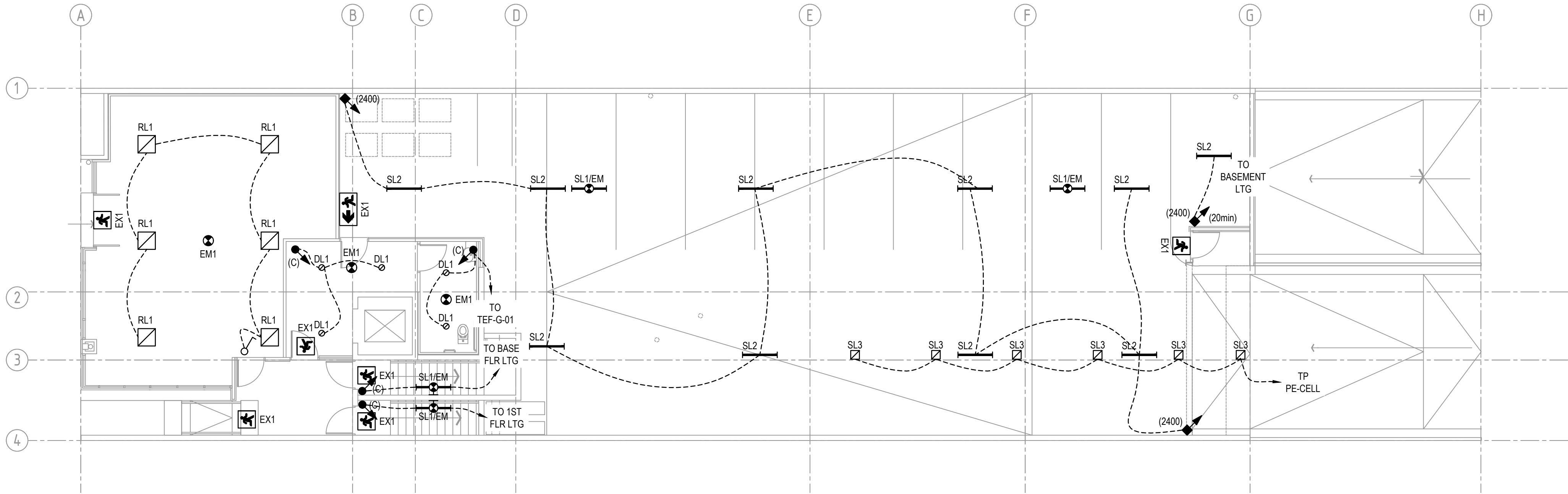


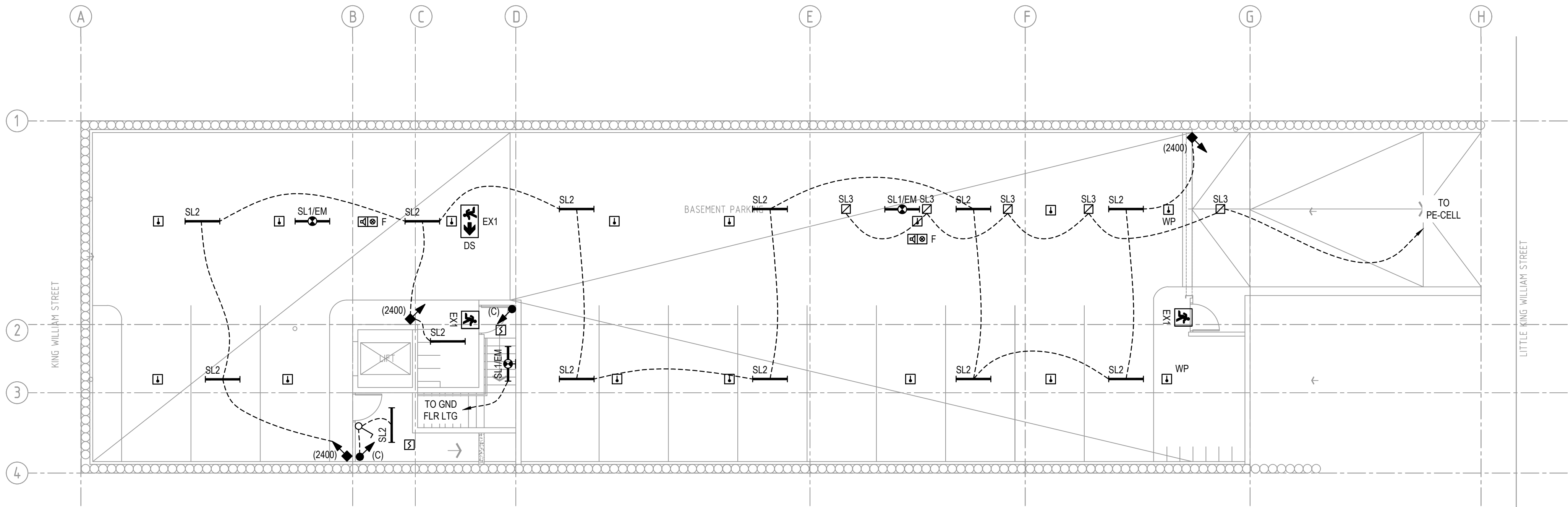
NOTES:

1. TYPE 'SL3' LIGHTS TO SWITCH ON DURING THE DAY (PE-CELL CONTROL) WHEN MOTION DETECTED. LOW BAY LIGHTS ARE NOT TO OPERATE AT NIGHT.
2. WHEN LIGHTING OCCUPANCY SENSOR DETECTS MOTION IN CAR PARK, ALL LIGHTS IN CAR PARK ARE TO SWITCH ON EXCEPT TYPE 'SL3' LIGHTS AT NIGHT.
3. FIP TO CONTROL FIRE PUMP.

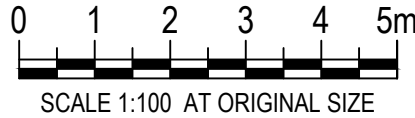


GROUND FLOOR PLAN  
SCALE 1:100

DRAWINGS TO BE READ IN CONJUNCTION  
WITH ELECTRICAL SPECIFICATION



BASEMENT PLAN  
SCALE 1:100



**BUILDING RULES**

Rev	Date	Issue Description	By
1	22-06-18	BUILDING RULES CONSENT	CLB
0	18-05-18	BUILDING RULES CONSENT	CLB

Project  
**PROPOSED COMMERCIAL DEVELOPMENT**  
97 KING WILLIAM STREET  
KENT TOWN

Title  
**ELECTRICAL SERVICES**  
BASEMENT AND GROUND FLOORS -  
LIGHTING AND SECURITY LAYOUT

Architect


**ANTHONY DONATO ARCHITECTS**

Suite 5/59 Fullarton Road | Kent Town SA 5087  
t. 08 8364 6888 | f. 08 8364 5355 | www.adarchitects.com.au

**SECON**  
consulting engineers

456 PULTENEY STREET  
ADELAIDE  
SOUTH AUSTRALIA 5000

TEL: 08 8223 7800  
engineers@secon.net.au  
A.B.N. 30 613 300 299  
A.C.N. 613 300 299

© COPYRIGHT SECON PTY. LTD. 2017			
North	DRAWN	CLB	CHECKED
	ENG	RB	Q.A. AD
	DATE	MAR 18	SCALE 1:100 @ A1
	DRAWING No.		SHEET 4 OF X
	B8014-E04		
PLOT DATE: 22/06/2018		Size: A1	Rev. 1